

## WHAT SUPPORT CAN YOU GET?

Disability Advice Service Lambeth can—Talk to Social services on your behalf and act as an advocate



Advise on money matters—how to manage your money pay staff and keep records about your direct payment



Support with recruiting and interviewing staff



Advise on your responsibilities and rights as an employer

Discuss with you other ways to use your direct Payment if you don't want to employ a personal assistant



## DISABILITY ADVICE SERVICE LAMBETH

DIRECT PAYMENTS SUPPORT SERVICE  
336 BRIXTON ROAD  
LONDON  
SW9 7AA

### CONTACT



Kate  
020 7642 0041



020 7642 0038/0041/2016



[direct.payments@disabilitylambeth.org.uk](mailto:direct.payments@disabilitylambeth.org.uk)



DASL's Direct Payments Support Service is funded by Lambeth Council. Charity Number 1087399

DISABILITY ADVICE SERVICE LAMBETH

# DIRECT PAYMENTS

Direct Payments ~ Choice, Flexibility, Control



# WHAT ARE DIRECT PAYMENTS?

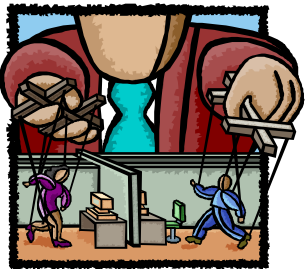
A Direct Payment is money given to you by Social Services to buy your own care services



One way you can use your direct payment is to employ a personal assistant to support you



You are in control of your care



You have more choice over who provides your support



# WHAT CAN I USE MY DIRECT PAYMENT FOR?

To go to college



Help with cleaning



Help with shopping



To do some sports



To support you with personal care

# WHAT DO I NEED TO DO?

Open a bank account



Become a boss and employ a personal assistant

Pay your staff



Keep records and monitor your Direct Payment

