

DASL is an independent user-led charity set up in 2001 which works with disabled people and carers in Lambeth.



We provide five main services:

- Advice and Information for Disabled People
- Advice and Information for Carers
- Support with Direct Payments
- User Involvement Service for Disabled People
- Lambeth & Southwark Stroke User Network

We welcome disabled people and others who support our work as members and volunteers. By joining DASL you will receive the Mole newsletter regularly and, if you wish, can take part in meetings and other events and activities. We work from fully accessible premises near the centre of Brixton, served by good public transport. Car parking is available for disabled people. If you can't come to see us we can visit you at home.

336 Brixton Road, London SW9 7AA

General enquiries: (020) 7738 5656

Fax: (020) 7924 9621

Email: enquiry.line@disabilitylambeth.org.uk

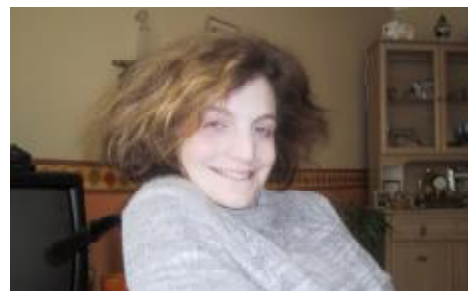
www.disabilitylambeth.org.uk

DASL is funded by Lambeth Council, NHS Lambeth, City Bridge Trust, the Rank Foundation, Guy's & St Thomas' Charity, London Catalyst and Southwark Health & Social Care

Charity no. 1087399 Company no. 04214688 **January 2010**



disability advice service lambeth



independent living for disabled people

Advice and information for Disabled People



We provide general advice and information on all aspects of disability including :

- welfare benefits
- disability rights
- work, training & education
- holidays, sport and leisure
- getting around
- health matters
- equipment & adaptations
- organisations and services

Our free 'Mole' newsletter is packed full of news and information of interest to disabled people.



Our lively website at www.disabilitylambeth.org.uk is updated daily and has a wide range of information, news and events and a discussion forum for disabled people.

Stroke User Network

DASL coordinates the **Lambeth & Southwark Stroke User Involvement Network**. We are working with people of all ages in the two boroughs who have had strokes, and with their family carers.



The Network organises meetings and events, provides information, brings users and professionals together and supports people who have had strokes to access services in the community.



Users deliver key services including peer support and befriending and contribute to the planning, design and evaluation of stroke services.

To find out more or get involved :

Tel: 020 7642 2054

email: stroke.network@disabilitylambeth.org.uk

website: www.disabilitylambeth.org.uk

User Involvement Service

Our '**Have your say**' service works with people with physical and sensory impairments and with older people in Lambeth. It is jointly managed with Age Concern Lambeth.



We support users to get involved in planning and assessing the services they use and to be active members of local Partnership Boards. We

make sure that disabled people are consulted on important initiatives and developments. Our website has a discussion forum through which you can talk with other disabled people about things that matter to you.

We are currently supporting Lambeth's new Pan-Disability Forum which is a group of disabled people working together to get their voices heard by service providers in Lambeth.



To find out more or get involved :

Tel: 020 7642 2054

email: user.involvement@disabilitylambeth.org.uk

website: www.disabilitylambeth.org.uk

We also offer a high quality Advice Casework Service for Disabled People. We give advice on welfare benefits, community care and housing. We can also give help with debt problems, tax credits, obtaining Social Fund and charitable grants and helping people apply for transport benefits such as Freedom Passes, Blue Badges and Taxicards.

For all these services **Contact the Enquiry Line**

Monday, Wednesday, Friday 10am – 1pm

Tuesday, Thursday 10am - 3pm

Tel: 020 7738 5656

Fax: 020 7924 9621

Email : enquiry.line@disabilitylambeth.org.uk

Advice & information for Carers

We are part of a consortium of local charities which is providing the new **Lambeth Carers' Hub** services. The consortium also includes Crossroads Care - South Thames and Age Concern Lambeth. Our main role is to provide general advice and information for carers on any issues with which they need support.

Contact the Carers' Enquiry Line

Monday - Friday, 9am – 5pm

Tel: 020 7642 0038 Fax: 020 7924 9621

Email: carers.enquiries@disabilitylambeth.org.uk

Website: www.disabilitylambeth.org.uk/ carers

Support with your Direct Payments

DASL is funded by Lambeth Council to provide the independent Direct Payments Support Service, offering information, advice and training for people who wish to arrange their own care and support.

Our services to users include :

- Initial information about direct payments as an option
- Support with your application for Direct Payments including liaison with Adult Social Services and Children's & Young People's departments
- Set-up information and advice on managing your Direct Payment
- Support with recruitment of your own staff
- Advice on employees' rights and employers' responsibilities
- Advice on managing your personal assistants
- Access to a third party and payroll service provided by Sutton Centre for Independent Living and Learning in partnership with DASL
- On-going support with issues that arise once you are using Direct Payments
- Regular meetings at which users can meet each other and talk with key professionals

We also provide:

- Advice and training for professionals
- Activities such as presentations and displays to promote Direct Payments within the local community
- Partnership and policy work with Lambeth Council and other organisations with an interest in Direct Payments



Contact our Direct Payments team
Monday to Friday 9am – 5pm,
Tel: 020 7642 0041 or 020 7642 2016
Fax: 020 7924 9621
Email: direct.payments@disabilitylambeth.org.uk
Website: www.disabilitylambeth.org.uk